

STAINLESS STEEL

TEMPERATURE GAUGE
BI METAL



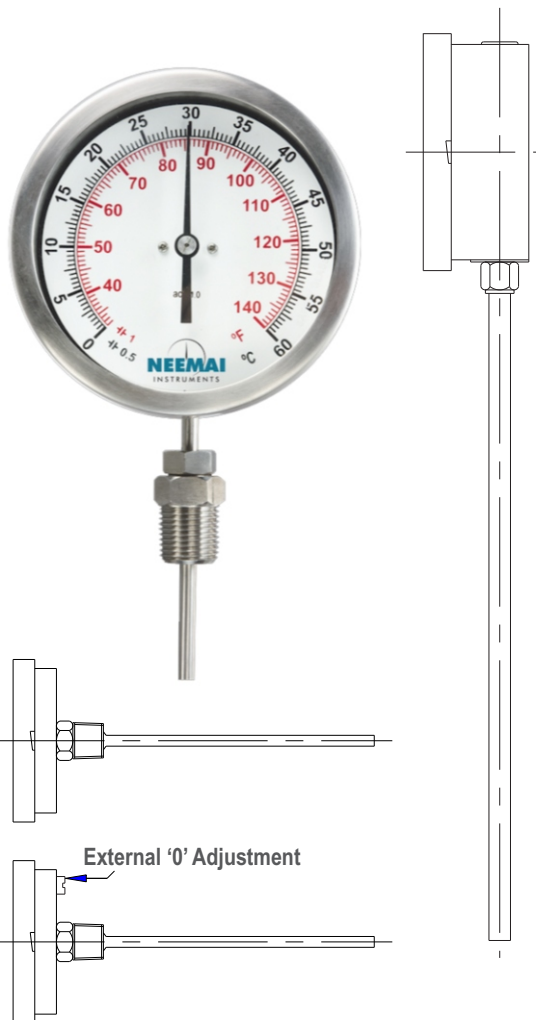
MODEL: BEZ

FEATURES:

- Bimetal helix system
- Hermetically sealed
- Optional External '0' Adjustment

APPLICATION:

- Liquid & gaseous mediums
- Corrosive environments
- Oil & gas applications
- Chemical & Petrochemical



STANDARD SPECIFICATIONS

Dial size	63/ 80/ 100/ 150 mm
Range	-50 to 400°C
Mounting pattern	Direct Back / Direct Bottom
Stem size	6/ 8/ 10 mm
Stem length	65 mm to 1000 mm
Ingress protection	IP 65
Process connection	1/2" NPT / BSP (M)

MATERIAL OF CONSTRUCTION

Sensing element	Coiled Bimetal Strip
Stem	AISI 316 SS
Process connection	AISI 316 SS / 304 SS
Case & Ring material	AISI 304 SS (Bayonet type Bezel)
Dial	Aluminum, black graduation on white background
Pointer	Zero adjustable, aluminum, black powder coated
Gaskets	Neoprene
Window	Sheet / Safety glass

STANDARD PARAMETERS

Accuracy class	±1.0% as per EN 13190
Ambient temperature	-25 to 65°C
Over range limits	110% full scale
Stem pressure rating	15 bar (without thermowell)
Joints	TIG argon arc welding

Glycerine filled

Gaskets & Filling plugs	Neoprene
Dampening liquids	Glycerine 99.7% (-20 to 65°C) (up to 100°C)

Silicon filled

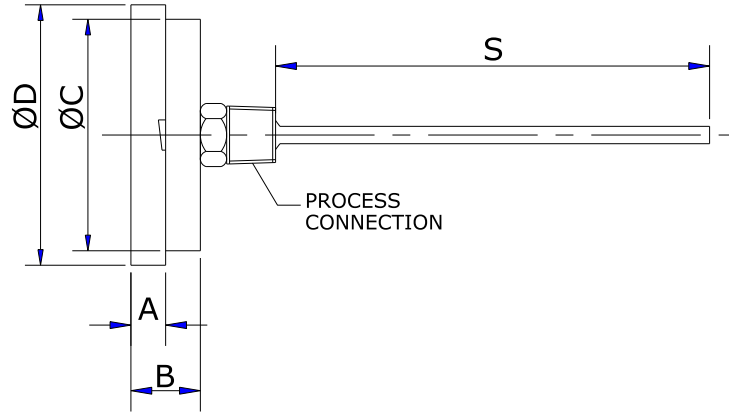
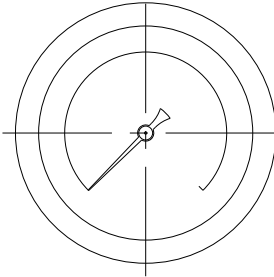
Gaskets & Filling plugs	Neoprene
Dampening liquids	Silicon oil (up to 200°C)

STAINLESS STEEL

TEMPERATURE GAUGE
BI METAL

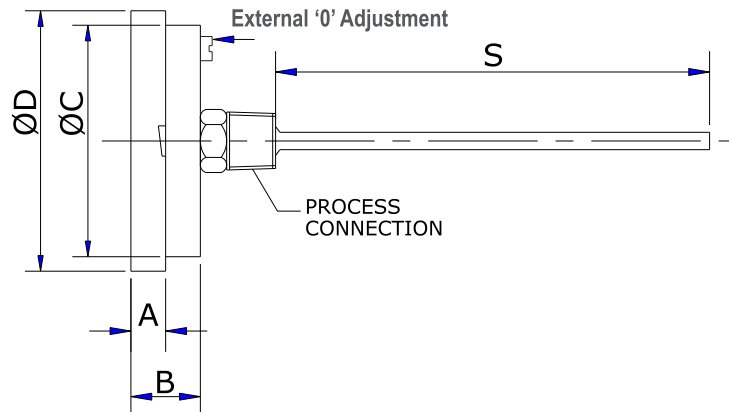
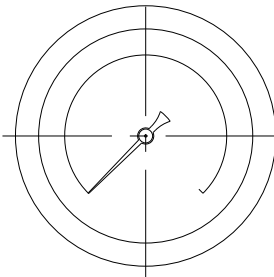


MODEL: BEZ



NS	A	B	ØC	ØD	S
100mm	12.5	23	100	111	*
150mm	15	25	149	159	*

*As per customer requirement.



NS	A	B	ØC	ØD	S
100mm	12.5	23	100	111	*
150mm	15	25	149	159	*

*As per customer requirement.